

## About Binary University

Established in 1984, Binary University is rated as a 5 STAR (Excellent) University by the Ministry of Higher Education, Malaysia. The University is a specialist university for Management, IT and Entrepreneurship. It is the ONLY University that produces a unique breed of graduates called Industry Specialist Professional (ISP) graduates who are equipped with industry - specific skills. This is why Binary University enjoys one of the highest graduate employability among all universities in Malaysia, i.e.: rate of 96% (Source: Tracer Study, MOE). In addition to this, all of its graduates are provided with extensive entrepreneurial skills to enable them to climb the corporate ladder faster.

Binary offers PhDs, Doctorate, Masters as well as Bachelor degree programmes and is patronized by international students from over 60 countries. Binary degrees are also being offered in Europe, Africa, Middle East, the Indian Sub Continent and Central Asia.

The university is supported by 5 dedicated research centres in social entrepreneurship, business entrepreneurship, women leadership, ICT and advanced management. The university also produces a peer reviewed journal called the International Journal of Management and Entrepreneurship (IJME) which is subscribed internationally.

The Association  
of Commonwealth  
Universities



## About Loyola Institute of Business Administration (LIBA)

LIBA is a premier B-school, established in 1979, to produce competent and committed leaders who are ethical, principle-centred, socially responsible with a global perspective and entrepreneurial spirit. LIBA is located within the premises of Loyola College. LIBA is managed by Jesuits of the Loyola College Society well-known for their outstanding contribution to higher education. LIBA stands for excellence and ethics which are the hallmarks of Jesuit business education. All its programmes and activities embody these two elements. LIBA earnestly strives to inculcate in the students the values of excellence, justice, honesty and service to the society.

LIBA focuses on the holistic formation of students in all quotients, viz., intellectual, social, emotional and spiritual. The institution works with an undeterred zeal to offer its students the best of education, blending classroom and experiential learning.

## The LIBA - Binary Partnership

The LIBA - Binary Partnership provides a unique opportunity for LIBA graduates to complete the internationally recognized Binary MBA at an affordable cost, the details of which are as follows:

- LIBA graduates who have completed the Executive Diploma in HRM, Marketing, Finance, etc. streams will enjoy 18 credits exemptions from the Binary MBA.
- LIBA graduates will need to complete 4 taught modules of 3 credits each (12 credits) and a thesis of 6 credits.
- LIBA graduates will complete 2 modules at LIBA, taught by LIBA and Binary Faculty and the final 2 modules plus thesis by Binary faculty at Binary University.

## The Binary MBA

The Binary MBA (full-time) aims to produce Industry - Specialist Professionals (ISP) who possess the following:

- A thorough understanding on general management.
- Excellent problem-solving and analytical skills, necessary to function as an effective manager.
- In-depth practical knowledge of a specific industry in which the graduate has a passion to work in.
- The entrepreneurial and leadership skills needed to drive an organisation beyond the ordinary.

## Learning Outcomes

Upon completion of this programme, the student will be able:

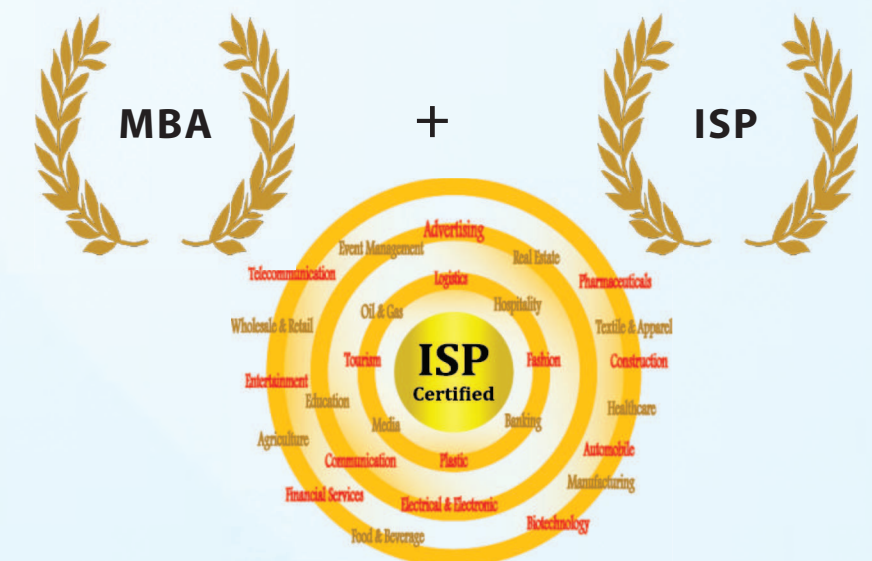
- To analyse and solve managerial problems effectively.
- To evaluate the impact of globalisation on people, businesses and the economy.
- To communicate effectively.
- To analyse how social and ethical issues affect organisational strategies, structures, and systems.
- To analyse a firm's behaviours which lead to sustainable competitive advantages.
- To critically examine the role of entrepreneurship within a corporate environment.

## Binary MBA to Doctoral Programmes

Upon completion of the Binary MBA, you may pursue one of the following programmes:

- The Doctor of Philosophy (PhD)** offering research areas in Entrepreneurship, Leadership, Marketing, Human Resource Management, Total Quality Management, Finance and IT.
- The Doctor of Business Administration (DBA)**

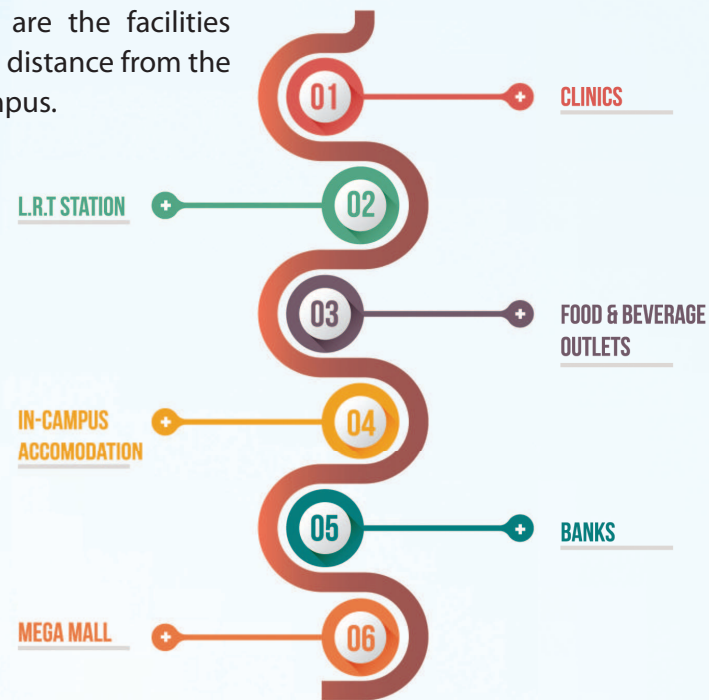
The PhD is the highest academic research degree whereas the DBA is an applied research management degree. The PhD is open to anyone who holds a recognised Masters, whereas the DBA is open to those who possess a recognised Master plus 5 years working experience at managerial level.





## FACILITIES at the BINARY UNIVERSITY:

The following are the facilities within walking distance from the University Campus.



Binary University's green campus provides students a conducive environment to study with in-campus accommodation, wide choice of food and beverage outlets, shopping malls, clinics, entertainment centres and banks, all within walking distance from the university.



## FEE STRUCTURE

a) **Fees to be paid to the Binary University : US \$3500**  
(This need to be paid directly to the Binary University - details regarding mode of payment will be informed.)

The fees include:

- Tuition Fees
- Accommodation at the Binary University for 15 days
- Airport Transfer at KL.

Fees must be paid before July 01, 2017.

b) **Fees to be paid to LIBA : Rs 30,000**

The fees include:

- Learning materials
- Establishment charges
- Computer services

Fees must be paid before July 01, 2017.

c) Candidates have to take care of visa charges, airfare and food expenses while they are in Malaysia.

d) Candidates are required to obtain their passports so as to be able to travel to Malaysia.

## CLASS SCHEDULE

- Classes will commence in LIBA in the beginning of July 2017.
- Students will go to Binary in Oct 2017 for two weeks for 2 modules.

## ADMISSION PROCEDURE

Completed applications online ([www.liba.edu](http://www.liba.edu)) must reach before June 08, 2017.

## RIGHTS RESERVED:

LIBA reserves the right to change the requirements for admission or graduation, course content, fee structure, and regulations affecting students or to make any other suitable modifications, should these be deemed necessary in the interest of students, Institute, or the profession.

## CONTACT DETAILS - Loyola Institute of Business Administration (LIBA)

Loyola Campus, Nungambakkam, Chennai - 600 034, India

Phone : +91 44 28177100 / +91 44 28177116

Mobile : +91 94440 28418

Email : [admissions@liba.edu](mailto:admissions@liba.edu)

Website : [www.liba.edu](http://www.liba.edu)

## CONTACT DETAILS - Binary University

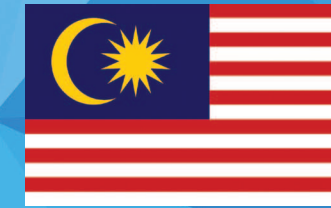
No.1, IOI Business Park, Persiaran Puchong Jaya Selatan,

Bandar Puchong Jaya, 47100 Puchong, Selangor Darul Ehsan, Malaysia

Phone : +603-8070 6590

Email : [admission@binary.edu.my](mailto:admission@binary.edu.my)

Website: [www.binary.edu.my](http://www.binary.edu.my)



**A PARTNERSHIP  
THAT OPENS CAREER  
OPPORTUNITIES GLOBALLY**

**THE BINARY  
MBA**



BINARY UNIVERSITY



Loyola Institute of  
Business Administration

**MASTERS IN BUSINESS ADMINISTRATION**

for those who have completed  
one-year Executive Diploma at LIBA